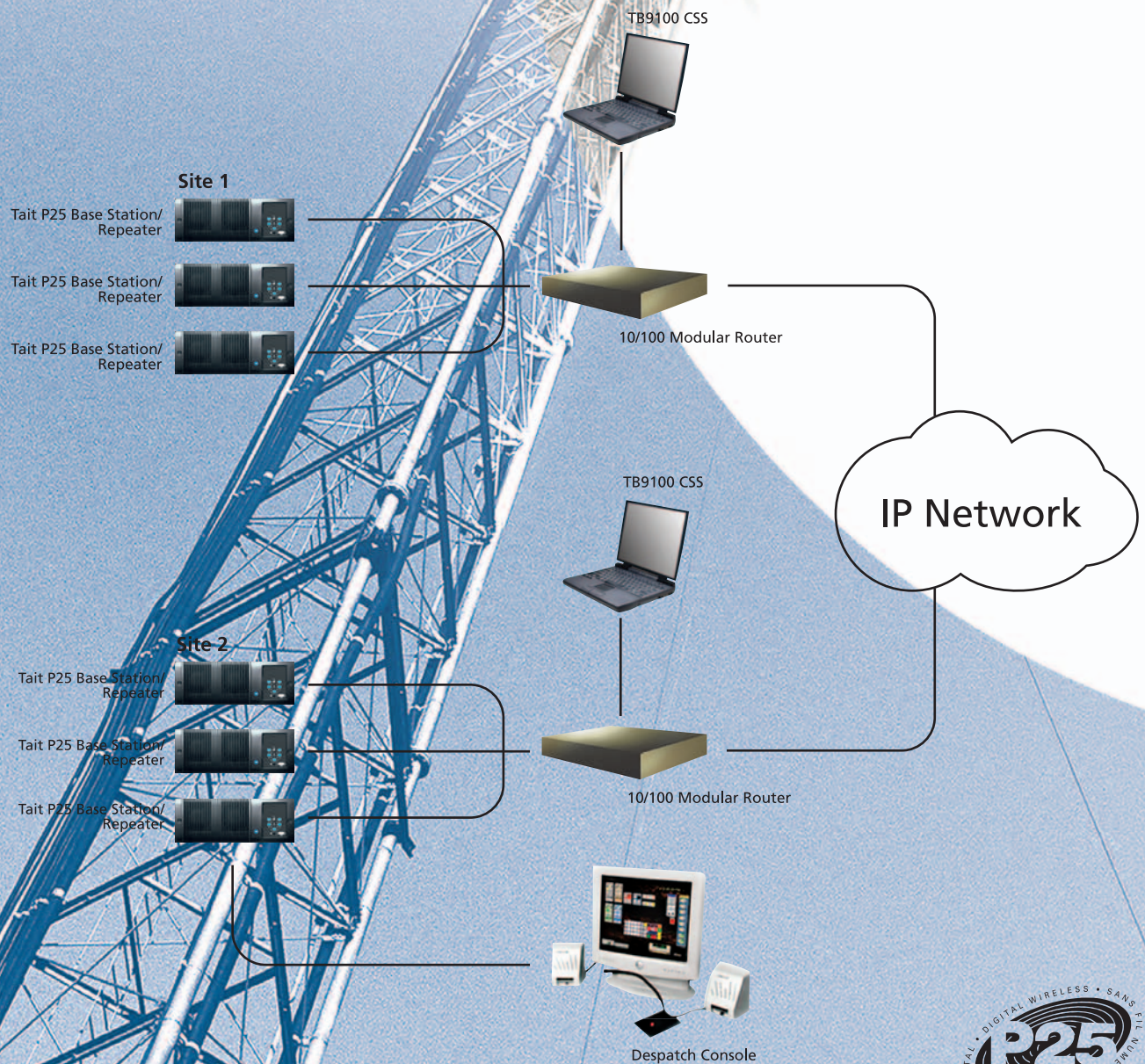


# Intelligent • High Performance • Flexible

## TaitNet P25 Project 25 conventional system

The TaitNet P25 Conventional System is the first in a series of innovative and high performing digital radio infrastructure products.

Combining Tait's proven RF engineering expertise with the latest in communications technology, TaitNet P25 is a family of APCO Project 25 compliant infrastructure solutions designed to meet the demanding requirements of public safety and service users today. TaitNet P25 will grow seamlessly into tomorrow's communications systems.





## TaitNet P25 Infrastructure solutions

Tait has involved public safety users in the design of TaitNet P25 to create a cost-effective radio communications platform that is easy to grow in size and functionality. TaitNet P25 is convenient to install, operate and maintain without compromising reliability or performance. It offers interoperable communications with analogue or other Project 25 compliant equipment.

### TB9100 P25 base station/repeater

The core of the TaitNet P25 platform is the software-flexible Tait TB9100 P25 base station/repeater. The TB9100 is an advanced, modular fixed station that can be configured as a repeater or as a base station in a conventional P25 system.

The TB9100 is programmed and controlled by the Customer Service Software (CSS) PC application, it can be upgraded through software options and offers a variety of industry-standard interfaces enabling connection to a wide range of network equipment.

### Integrated into the TB9100 are such features as:

- **Built-in Voting Facility**  
In a P25 network, TB9100 base stations use a built-in distributed voting facility to compare the received signals, selecting the best quality signal for transmission through the system.
- **Network Board**  
The built-in Network Board enables connection to a TaitNet P25 system, controls digital communications and provides line audio, digital inputs and outputs, plus several additional interfaces.
- **Despatch Systems Interfaces**  
Working with major despatch vendors, Tait has developed a variety of analogue and digital interfaces to third-party despatch systems.

### TB9100 Customer Service Software (CSS)

Running on a standard PC, laptop or workstation, the TB9100 CSS can be connected directly or remotely to a TB9100 base station to provide a variety of services including configuration, customised operational control, monitoring and diagnostics, alarm management, feature upgrades, and remote software downloads. A single CSS application is capable of servicing any TB9100 base station in the TaitNet P25 system.

### Creating a TaitNet P25 System

The TB9100 base station is designed to transfer P25 digitised voice or data across a packet-switched infrastructure using proven IP communications techniques. This voice-over-Internet Protocol (VoIP) technology allows Tait to use standard telecommunications equipment such as Cisco® routers and hubs combining TB9100 base stations to form an integrated Project 25 system. The systems can be expanded in the same way telecommunications networks are extended. It also provides a straightforward means of connecting other equipment and facilities to the system, for example adding Project 25 trunking operation to a TaitNet P25 Conventional system.

### Secure Communications

TaitNet P25 supports end-to-end secure voice and data communications using Project 25 standard DES or AES encryption. Software upgrades enable over-the-air re-keying (OTAR) of radios and interfacing to major third-party key management facilities.

[www.taitworld.com](http://www.taitworld.com)



For further information please check with your nearest Tait office or authorised dealer.

Authorised Dealer

